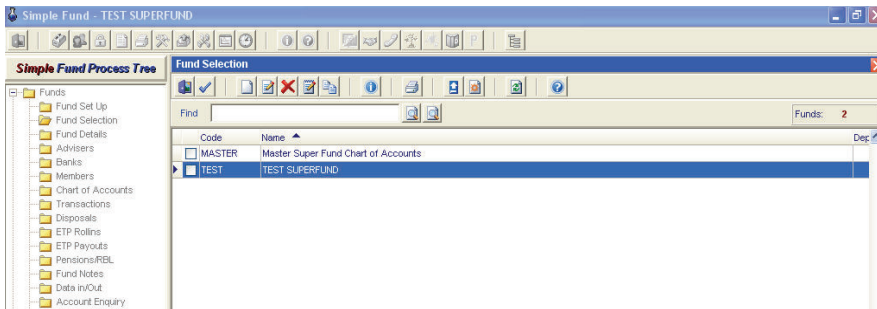


BGL Simple Fund - Data In (Import)



Step 1

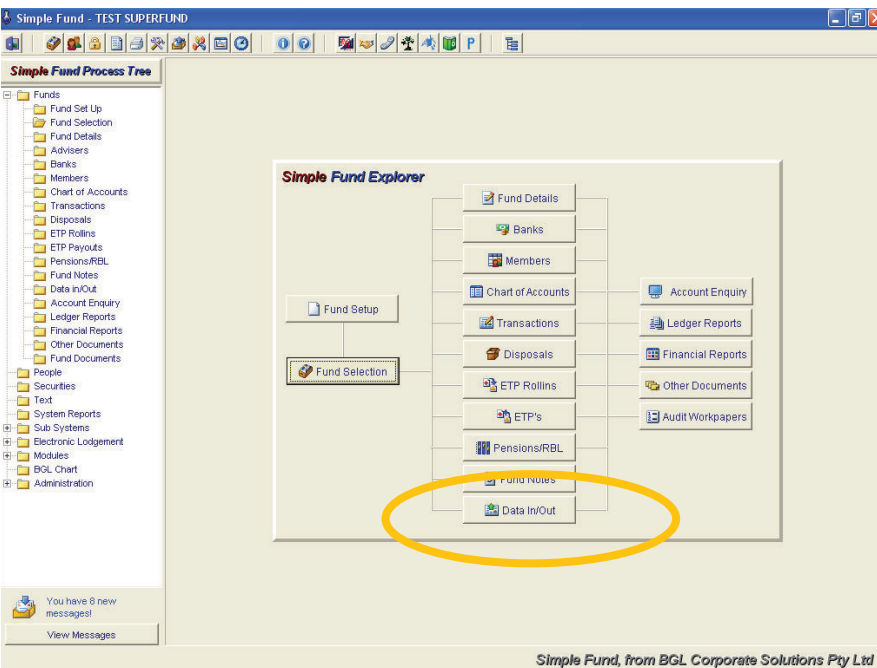
The following steps allow you to import data using BGL Simple Fund.

Step One

- Select the fund you wish to backup.

Step Two

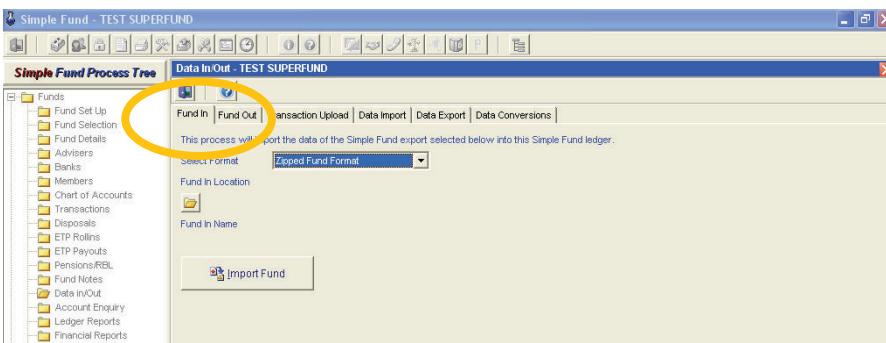
- Select **Data In/Out**



Step 2

Step Three

- Select **Fund In** Tab
- Select **Location** you want to save file
- Click **Import Fund** button



Step 3